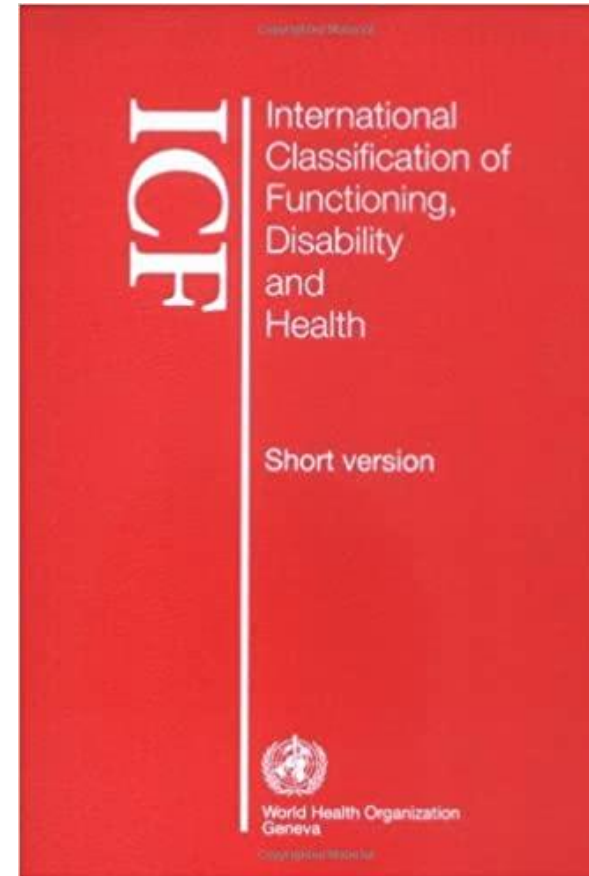


# Funksjonshemming - begrepsavklaring

ICF - Internasjonal klassifikasjon av funksjon, funksjonshemming og helse (WHO)



Disability – impairment

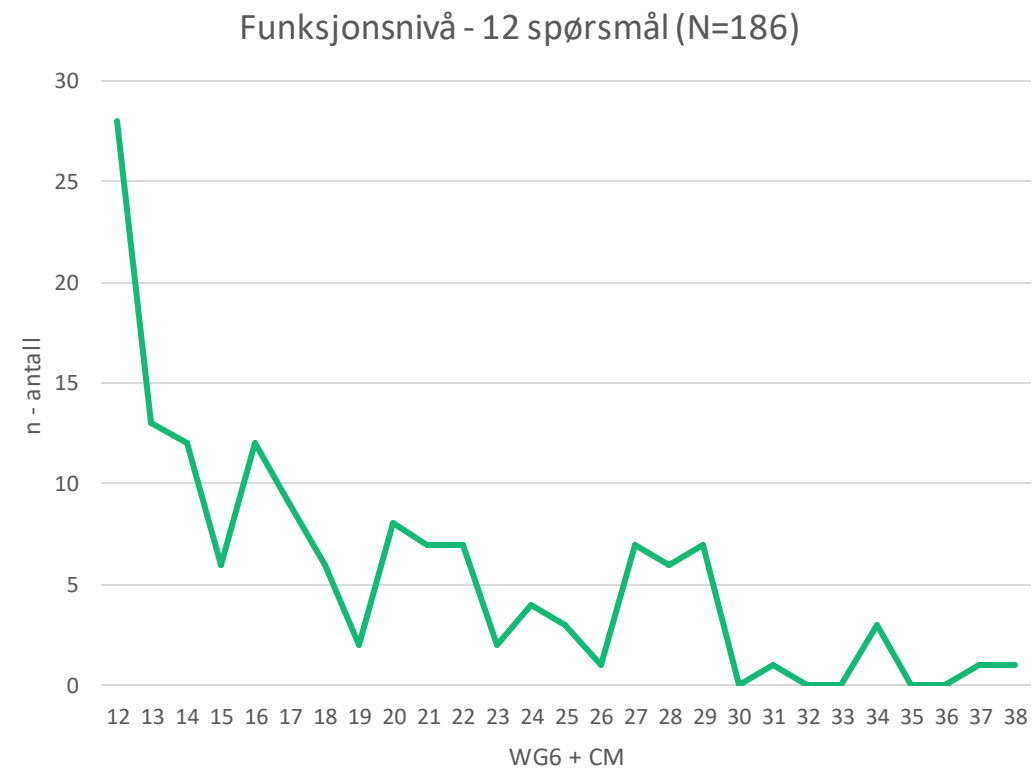
Medisinsk vs. sosial modell



SINTEF

# Mål på funksjonsnivå: WG6 + Child Module

Activities	Do you have any difficulties doing activities in your daily life that is due to your health?			
	(1) No difficulties	(2) Some difficulties	(3) A lot of difficulties	(4) Cannot do
.....seeing, even if wearing glasses?	0	0	0	0
.....hearing, even if wearing hearing aid?	0	0	0	0
.....walking on level ground or climbing stairs?	0	0	0	0
.....remembering or concentrating?	0	0	0	0
.....self-care	0	0	0	0
.....communicating; understand/being understood	0	0	0	0
.....learning things (compared to peers)?	0	0	0	0
.....remembering things (compared to peers)?	0	0	0	0
.....concentrating on something you like to do:	0	0	0	0
.....accepting changes in routines?	0	0	0	0
.....controlling yourself (compared to peers)?	0	0	0	0
.....making friends?	0	0	0	0

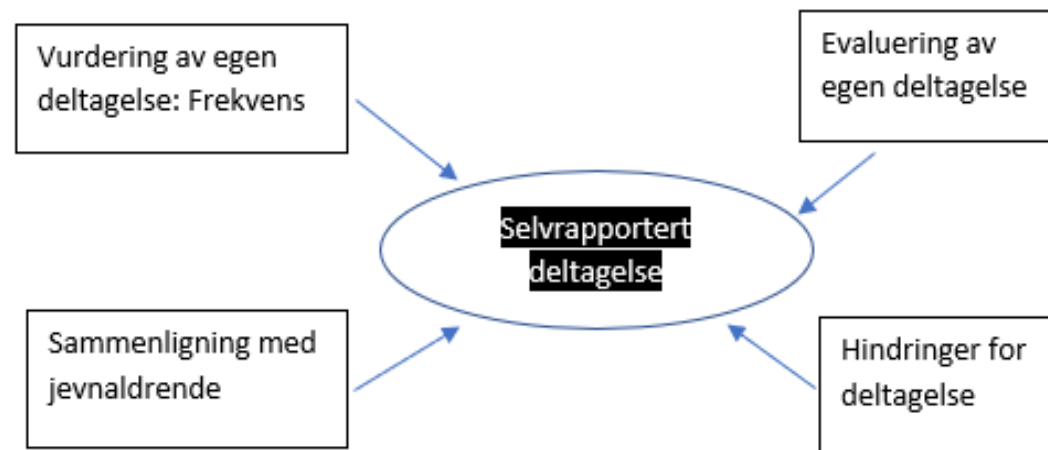




SINTEF

# Deltagelse - bekrepsavklaring

- ICF definerer deltagelse som "å engasjere seg i en livssituasjon"
- ICF inneholder en "matrix" for måling av deltagelse
- Det finnes ulike måter å måle deltagelse
- Vår studie har basert seg på eksisterende internasjonale måleinstrumenter og en tilpasning til "norsk kontekst"
- Vi har valgt å bruke fire ulike dimensjoner av barn/unges vurderinger av egen deltagelse



Figur: Måling av deltagelse

1



SINTEF

# Måling av deltagelse

- **Barrierer:**
  - **Opplever du hindringer i å delta i aktiviteter hjemme, på skole/jobb eller fritid??**
    - I stor grad (4), I noen grad (3), I liten grad (2), Ikke i det hele tatt (1)
- **Vurdering av egen deltagelse:**
  - **Barn og unge er med på mange forskjellige aktiviteter i løpet av en måned. Det kan være hjemme, på skolen, i fritiden – både organiserte og uorganiserte aktiviteter. Vurder din egen deltagelse.**

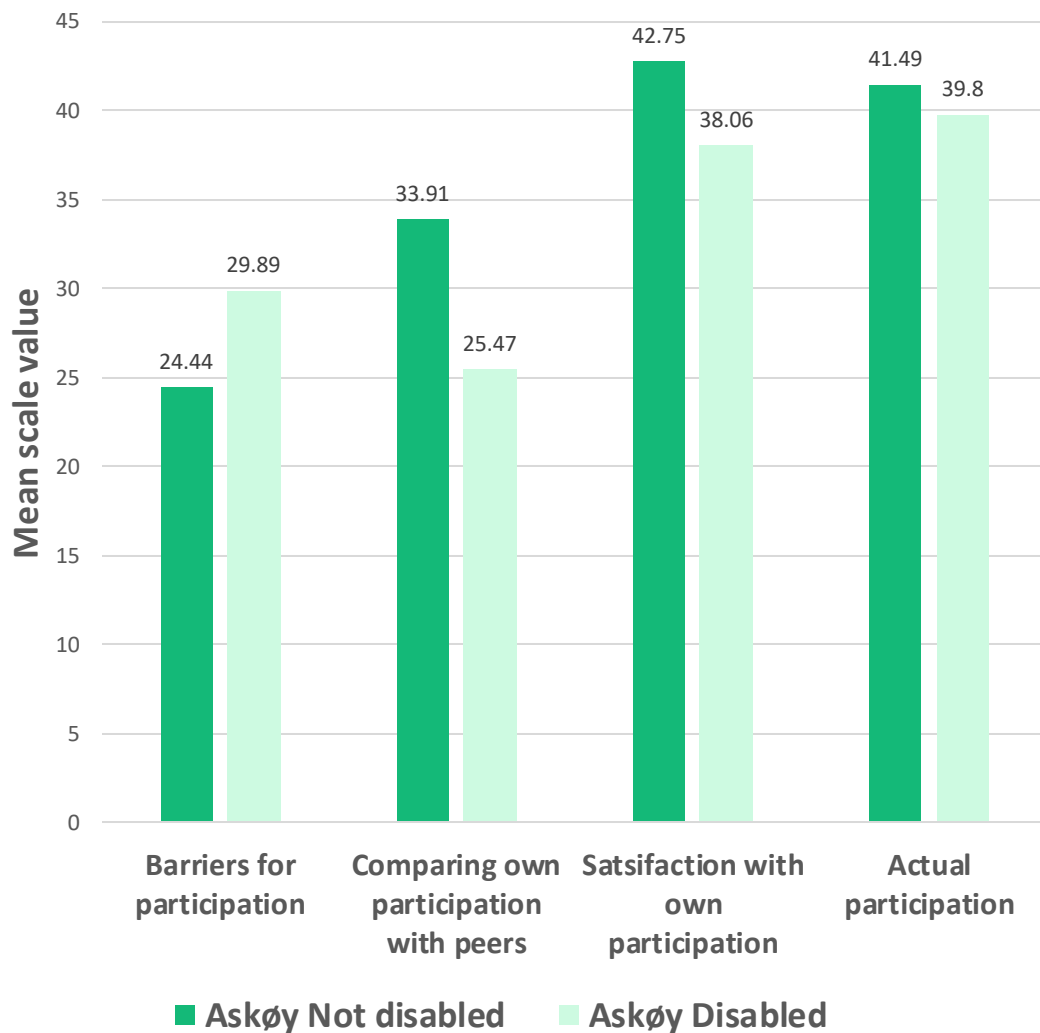
Hvor ofte er du .....

    - Aldri (1), Sjelden (2), Noen ganger (3), Ofte (4), Veldig ofte (5)
- **Sammenligning av egen deltagelse med andre:**
  - **Sammenlignet med andre, hvor ofte er du .....**
    - Aldri (1), Sjelden (2), Noen ganger (3), Ofte (4), Veldig ofte (5)
- **Tilfredshet med egen deltagelse:**
  - Hvor **tilfreds er du med din egen deltagelse** når du er er .....
    - Veldig tilfreds (5), Tilfreds (4), Hverken eller (3), Utilfreds (2), Veldig utilfreds (1)

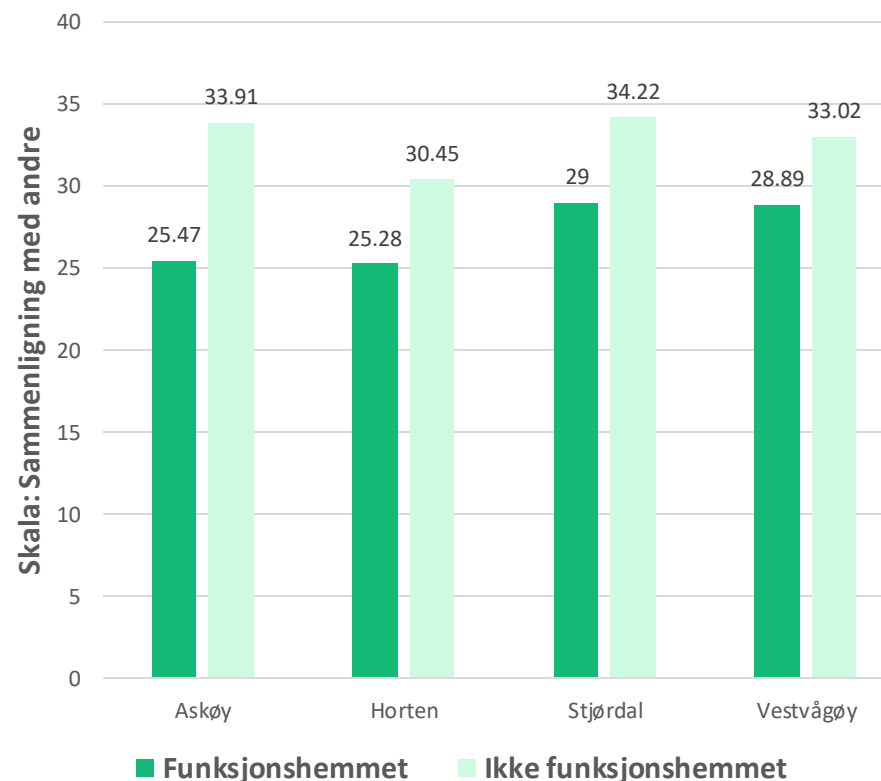


SINTEF

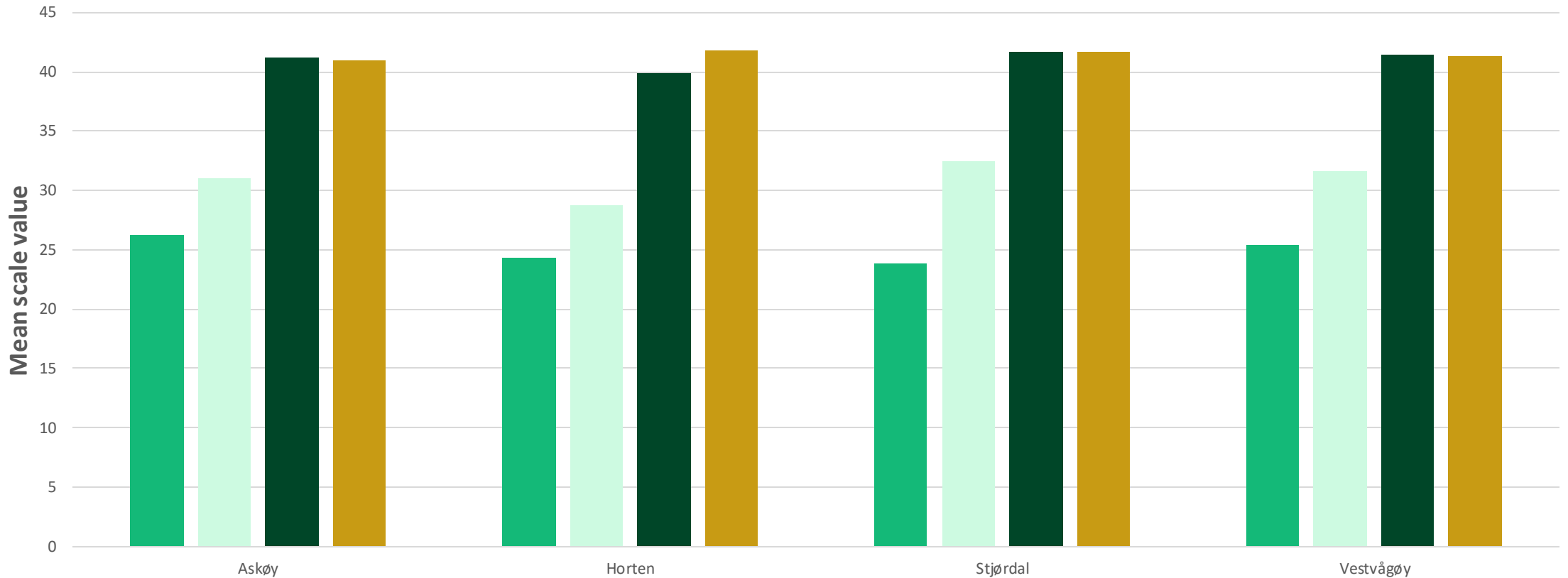
# Sammenligning av barn og unge med og uten funksjonshemninger – en kommune (N=73)



## Egen deltagelse sammenlignet med andre



# Sammenligning av deltagelse mellom kommunene



1. Stjørdal
2. Vestvågøy
3. Horten
4. Askøy

■ Barriers for participation
 ■ Comparing own participation with peers  
■ Satisfaction with own participation
 ■ Actual participation

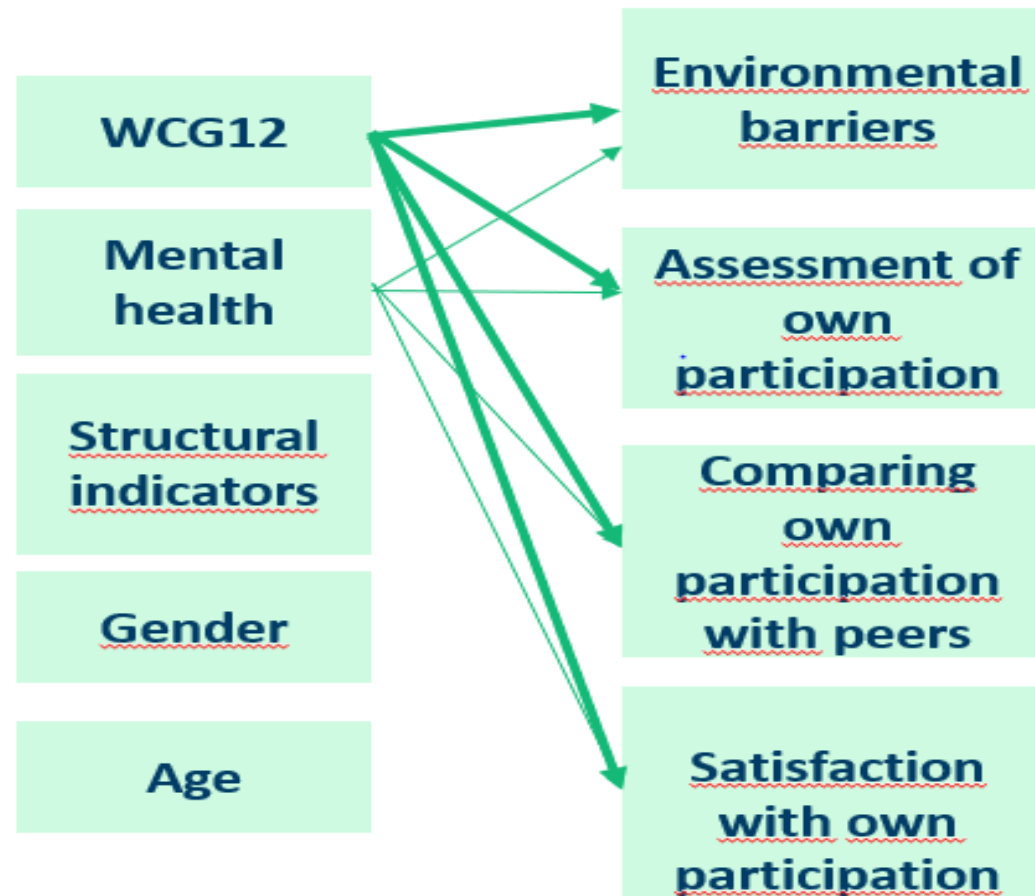


SINTEF

# Hva påvirker deltagelse?

Regresjonsanalyse av deltagelsesindikatorer  
Med følgende uavhengige variabler:

- Funksjonshemming (WCG12)
- Mental helse (enkelt spørsmål)
- Strukturelle indikatorer (% av budsjett til utvalgte tiltak)
- Kjønn
- Alder





SINTEF

# Systematisk måling av deltagelse blant barn og unge med funksjonsnedsettelse

- Måling/skalaene må videreutvikles:
  - Kognitiv testing
  - Validering
  - Reliabilitet
  - Vurdering av nye dimensjoner (motivasjon, intensitet, etc.)
- Nye forskningsspørsmål:
  - Utvikle modell som forklarer hva som stimulerer eller hindrer deltagelse
- Systematisk måling gir muligheter for å monitorere utvikling og virkning av intervensjoner/tiltak
- Systematisk måling kan være et godt verktøy for utvikling av tjenester som skal stimulere deltagelse
- Ulike alternativ:
  - Gjentatte surveys basert på interesse
  - Oppbygging av en systematisk innhenting av data: Kvalitetsregister



Article

## Participation and Inclusion of Children and Youth with Disabilities in Local Communities

Arne H. Eide <sup>1,2,\*</sup>, Dag Ofstad <sup>3</sup>, Marit Støylen <sup>1</sup>, Emil Hansen <sup>3</sup> and Marikken Hoiseth <sup>1,4</sup>

<sup>1</sup> SINTEF Digital, Health Research, Forskningsveien 1, N-0314 Oslo, Norway

<sup>2</sup> Department of Social Work, Faculty of Social and Educational Sciences, Norwegian University of Science and Technology, N-7491 Trondheim, Norway

<sup>3</sup> Norwegian National Advisory Unit on Disability in Children and Youth (NKBFU), Valnesfjord Health Sports Center (VHSS), N-8215 Valnesfjord, Norway

<sup>4</sup> Department of Design, Faculty of Architecture and Design, Norwegian University of Science and Technology, N-7491 Trondheim, Norway

\* Correspondence: arne.h.eide@sintef.no; Tel: +47-9348-2349

**Abstract:** This research aimed at strengthening the evidence base for interventions to promote the participation and inclusion of children and youth with disabilities in their communities. Four selected municipalities in four different regions of Norway participated. Focus group discussions (FGDs) were carried out in all four municipalities with service providers, children and youth with disabilities, and parents of children and youth with disabilities. The FGDs were used to develop a questionnaire to measure participation indicators. A survey was carried out among 186 children and youth, combining (a) random sampling of children and youth without disabilities and (b) invitations to all children and youth with disabilities, as registered by the municipalities. High-level analyses of the FGDs are presented, indicating the barriers and facilitators for participation for children and youth with disabilities, as well as requests for improvement of services to stimulate participation. The categories of family, technology, and volunteering were identified primarily as facilitators of participation, while school environment was primarily identified as a barrier. The survey measured four different aspects of perception of one's own participation. Data analyses revealed higher level of environmental barriers among children and youth with disabilities, and lower level of actual participation, satisfaction with one's own participation and one's own participation compared with that of peers.

**Keywords:** participation; inclusion; local community; children; youth; disabilities



Citation: Eide, A.H.; Ofstad, D.; Støylen, M.; Hansen, E.; Hoiseth, M. Participation and Inclusion of Children and Youth with Disabilities in Local Communities. *Int. J. Environ. Res. Public Health* **2022**, *19*, 11893. <https://doi.org/10.3390/ijerph191911893>

Academic Editor: Paul B. Tchourwou

Received: 22 August 2022

Accepted: 16 September 2022

Published: 20 September 2022

**Publisher's Note:** MDPI stays neutral with regard to jurisdictional claims in published maps and institutional affiliations.



Copyright: © 2022 by the authors. Licensee MDPI, Basel, Switzerland. This article is an open access article distributed under the terms and conditions of the Creative Commons Attribution (CC BY) license (<https://creativecommons.org/licenses/by/4.0/>).

[Eide AH, Ofstad D, Støylen M, Hansen E, Høiseth M \(2022\) Participation and Inclusion of Children and Youth with Disabilities in Local Communities. \*International Journal of Environmental Research and Public Health\*, \*19\*, 11893.](https://www.mdpi.com/1660-4601/19/19/11893#:~:text=(19)%2C%2011893%3B-,https%3A//doi.org/10.3390/ijerph191911893,-(registering%20A0DOI))  
[https://www.mdpi.com/1660-4601/19/19/11893#:~:text=\(19\)%2C%2011893%3B-,https%3A//doi.org/10.3390/ijerph191911893,-\(registering%20A0DOI\)](https://www.mdpi.com/1660-4601/19/19/11893#:~:text=(19)%2C%2011893%3B-,https%3A//doi.org/10.3390/ijerph191911893,-(registering%20A0DOI))